

SMARTbox

maximum space optimisation

Designed to optimise the maximum amount of capacity when erected and the minimum amount of space when folded, Smartbox is available in both solid and perforated formats, making it suitable for all types of industries.



- Easy one-man fold and erection.
- Up to 1:3 space saving when folded.
- Two heights available to maximise vehicle fill dependant on the size of truck.
- Perforated or solid sides and base.
- Large built-in document holders.
- Pallet base runners allow the Smartbox to be inverted for emptying.
- Pallet base complies with DIN standard ISO 6780 for ease of fork lift truck access.
- Fold-down doors facilitate easy access to solid versions when used in industrial applications.



Two base runners

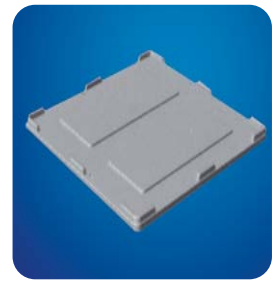


SMARTbox

minimum effort to fold
and erect



SMARTbox



Lid available

the same functionality
in a range of sizes

Smart Box	HDPE	FL138804	FL138904	FL130804	FL130904	FL138801	FL130801	FL132801
External Top Dimensions		1200 x 800 x 805 mm	1200 x 800 x 978 mm	1200 x 1000 x 805 mm	1200 x 1000 x 978 mm	1200 x 800 x 805 mm	1200 x 1000 x 805 mm	1200 x 1200 x 805 mm
Internal Dimensions		1120 x 720 x 660 mm	1120 x 720 x 833 mm	1120 x 920 x 660 mm	1120 x 920 x 833 mm	1120 x 720 x 660 mm	1120 x 920 x 660 mm	1120 x 1120 x 660 mm
Folded		1200 x 800 x 298 mm	1200 x 800 x 470 mm	1200 x 1000 x 298 mm	1200 x 1000 x 470 mm	1200 x 800 x 298 mm	1200 x 1000 x 298 mm	1200 x 1200 x 298 mm
Unit Load		500 kg	500 kg	500 kg	500 kg	500 kg	500 kg	500 kg
Capacity		515 litres	655 litres	668 litres	839 litres	515 litres	668 litres	821 litres
Weight		42 kg	49 kg	49 kg	58 kg	42 kg	45 kg	49 kg
Colour		Beige	Beige	Beige	Beige	Beige	Beige	Beige
Description		solid with base runners, one drop door on the long side				perforated with base runners, no drop doors		

TRUCK CAPACITIES	13.6m x 2.4m		13.6m x 2.7m		15m x 3m	
Smart Box capacities	Open	Folded	Open	Folded	Open	Folded
FL138701/FL138704	102	272	102	306	108	408
FL138904	68	170	68	204	108	222
FL130701/FL130704	78	216	78	242	90	330
FL130904	52	134	52	160	90	180
FL132701	66	180	66	202	72	272



Loading

Dynamic loading of 3 high with 500 kg in each Smartbox means that transport is economically utilised on each journey, whilst in the warehouse or coldstore a static load on level flooring will enable users to stack Smartbox up to 5 high.

Full Recyclable

The container, produced in High Density Polyethylene has no metal inserts or parts and is therefore 100% recyclable. Parts can easily be replaced without the use of special tools, should any damage occur.



RB142501, RB142601

fully perforated



REF	HDPE	RB142501	RB142601
External Top Dimensions		1060 x 395 x 295 mm	1190 x 490 x 370 mm
Internal Dimensions		1020 x 355 x 280	1145 x 445 x 350 mm
Unit Load		20 kg/unit	20 kg/unit
Capacity		100 litres	180 litres
Weight		4.3 kg	5.5 kg
Stock colour		Grey	Grey

Stackable containers, used in all types of industries covering applications from transporting flowers to the distribution of light weight automotive parts.

The containers are fully perforated, which make them ideal for viewing the product carried and giving good air circulation when required.

PC142504, PC142604, PC142804

solid sides and base

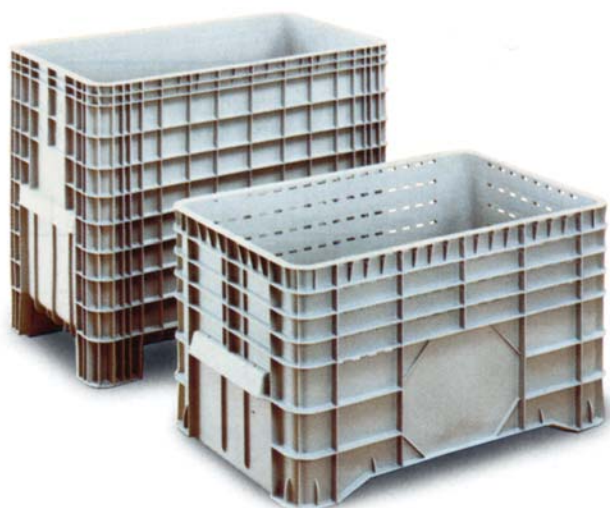


REF	HDPE	PC142504	PC142604	PC142804
External Top Dimensions		1200 x 800 x 800 mm	1040 x 640 670 mm	1040 x 640 x 550 mm
Internal Dimensions		1120 x 750 x 650 mm	930 x 590 x 515 mm	930 x 590 x 400 mm
Unit Load		250 kg/unit	250 kg/unit	250 kg/unit
Capacity		550 litres	285 litres	220 litres
Weight		22 kg	13.5 kg	11.5 kg
Stock colour		Grey	Grey	Grey

The ability to handle these containers by fork lift or hand truck make them ideal for those heavy weight applications across all types of industries. Applications include bulk meat handling, engineering parts, automotive goods and textiles.

Castors and lids are available on request.

PC142901, PC142704



REF	HDPE	PC142901	PC142704
External Top Dimensions		1020 x 640 x 580 mm	1030 x 600 x 840 mm
Internal Dimensions		930 x 590 x 510 mm	950 x 550 x 725 mm
Unit Load		250 kg/unit	250 kg/unit
Capacity		300 litres	400 litres
Weight		10.5 kg	20.5 kg
Stock colour		Grey	Grey

Particularly suitable for the requirements of textile manufacturing during spinning, spooling, weaving and dyeing, the containers are light in weight for easy handling, but very robust and durable. Moulded in High Density Polyethylene, these bulk bins are also suitable for handling food products.

Castors and lids are available on request.

LINPAC Materials Handling – Australasia
Tel: +61 2 9820 2222 **Fax:** +61 2 9820 3772

LINPAC Materials Handling – Benelux
Tel: +32 89 350 699 **Fax:** +32 89 350 596

LINPAC Materials Handling – Brazil
Tel: +55 54 229 870 **Fax:** +55 54 229 4003

LINPAC Materials Handling – Denmark
Tel: +45 32473134 **Fax:** +45 32525206

LINPAC Materials Handling – France
Tel: +33 3 80 95 69 00 **Fax:** +33 3 80 95 69 24

LINPAC Materials Handling – Germany
Tel: +49 5222 970-0 **Fax:** +49 5222 970-126

LINPAC Materials Handling – Ireland
Tel: +353 1 846 2323 **Fax:** +353 1 846 2522

LINPAC Materials Handling – Poland
Tel: +48 22 757 90 04 **Fax:** +48 22 757 90 10

LINPAC Materials Handling – Scandinavia
Tel: +46 4035 2900 **Fax:** +46 4035 2908

LINPAC Materials Handling – South Africa
Tel: +27 21 577 120 **Fax:** +27 21 577 3399

LINPAC Materials Handling – Spain
Tel: +34 93 317 51 91 **Fax:** +34 93 412 03 74

LINPAC Materials Handling – Turkey
Tel: +90 212 335 64 31 **Fax:** +90 212 335 25 00

LINPAC Materials Handling – USA
Tel: +1 502 863 5500 **Fax:** +1 502 863 5342



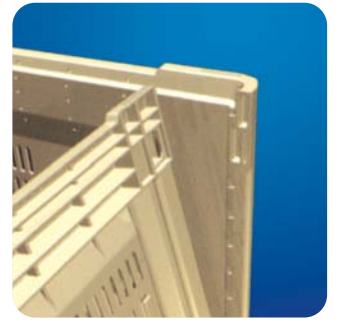
Newfield Close, Green Lane,
Walsall, West Midlands, WS2 7PB, UK

Tel: +44 (0) 1922 726060

Fax: +44 (0) 1922 658801

email: lmhsolutions@LMHGlobal.com

website: www.LMHGlobal.com



SMARTbox

the space saver

