



# LINPAC Materials Handling automotive packaging solutions





# LINPAC offers the total packaging solution

Returnable transit packaging (RTP) from LINPAC is the ideal solution for many companies involved in today's automotive supply chain. The breadth of our product range, the scope of our design, technical and manufacturing resources, together with our unique package of added-value services, means that only LINPAC Materials Handling is able to provide a true 'one stop' solution to your needs. Our appreciation of the tremendous commercial benefits that innovative, re-usable, packaging solutions can deliver, makes us the ideal partner to help develop your own custom designed system.



# stacking containers

## durable product protection



LINPAC stacking containers are manufactured to suit the most demanding of automotive environments with a range of lids and dollies to ease manoeuvrability.





# versatile Galia folding containers



The range of Galia size folding containers is ideal for the transportation and presentation of small parts to lineside. Giving an optimum fill during delivery, the folding Galia containers also gives maximum space savings for returns to the suppliers.





# heavy duty KLT stacking containers

LINPAC's KLT packaging system is commonly used in heavy-duty applications and easily works within automated or manual handling systems. With its various accessories such as dunnage systems, container lids and pallet lids, the KLT successfully operates in all parts of the supply chain.



- Standard KLT
- double walls
  - composite base
  - loads up to 50 kg



- Light KLT
- single walls
  - smooth base
  - loads up to 20 kg



- Re-design KLT
- single walls
  - composite base
  - loads up to 20 kg



- Foldable KLT
- single walls
  - composite base
  - smooth base
  - loads up to 20 kg





# tailored containers, durable construction for maximum protection

Standard containers may be inserted to make one-piece mouldings designed to carry specific engineered components. The moulded inlays in the container base ensure that components stay firmly in place during transportation and are easily available for decanting either by robot or by hand. Component auditing is made simple, quality standards are second to none and production lead times are reduced.





# pallet lid systems for efficient containment of stacking containers

The pallet lid combination makes an efficient packaging system when used in conjunction with stacking containers. To avoid the use of stretchwrap or strap banding the addition of the seatbelt system keeps boxes securely in place in transit and storage promoting a totally waste-free system.





# folding large containers robust modular packaging systems

LINPAC's range of folding large containers offers a tough, durable solution for bulky items. They can be customised by extending and or adding protective dunnage systems to reduce the risk of in-transit or trackside product damage.





# heavy-duty Ropak systems for outstanding performance and durability

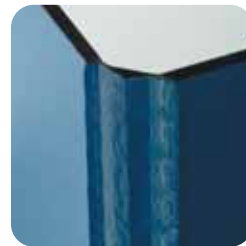
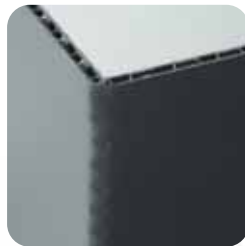
LINPAC's heavy duty Ropak range offers considerable loading capacity in Powertrain applications, including engine builds and steering rack assemblies. The range is available in a variety of heights and lengths in standard colour black. Special colours are also available, dependant on quantity ordered.

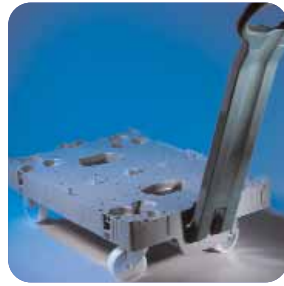




# versatile lightweight sleeve packs with outstanding bulk capacity

One of the key benefits of LINPAC's sleeve pack systems is the ability to collapse the bulky container when empty to a quarter of its original height. The versatility of the range offers footprint sizes from 1200 x 800 x 870mm to 1200 x 1600 x 1000mm and is available with either corrugated cardboard or plastics sleeves with drop down doors for easy access.





# Heavy-duty dolly systems

LINPAC's range of heavy-duty dollies with optional handles or steel frame systems enhance productivity, safety and manoeuvrability in the work place, aiding in the creation of a Fork Lift Truck free environment.





## Heavy-duty steel stillages

Manufactured and designed for use with heavier components, LINPAC offer a range of bespoke steel racks. Used in conjunction with our range of versatile dolly systems the racks offer an ideal solution for production fed lineside environments.





# lineside sequencing modules for sequenced component assembly

Tailor-made sequencing units and bag systems not only help increase operational efficiencies but also remove the risk of in-transit and trackside damage to components. LINPAC works with you to design and create steel racks with vacuum-formed foamed and hammock dunnage to meet your exact requirements.





## purpose designed, re-usable engine cells

Robust, durable and easy to handle, the plastic moulded cell is used to house an engine safely and securely, minimising the risk of movement and vibration damage during transit to the car assembly factory.

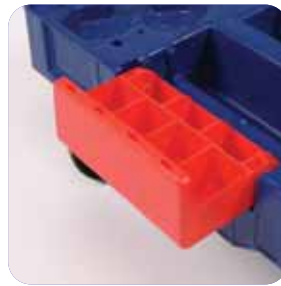




# Maxi-Pac wheeled lineside units

These wheeled units allow distribution of smaller components direct to trackside. The units' smaller footprint also offers greater flexibility throughout the automotive supply chain.





# attached lid containers when security is premium

LINPAC's ALCs are moulded from super-tough polypropylene complete with strong, secure hinges and locations for security seals.





# dunnage systems for segregation and containment

Tailor-made expanded polypropylene (EPP), welded polypropylene dividers and vacuum formed dunnage systems are an effective way of keeping products separate and contained during transit removing the risk of damage. Removable dunnage also ensures that containers can be used for a range of products and applications.

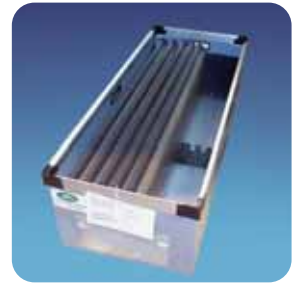




# dunnage systems for folding large containers

LINPAC manufacture and supply a comprehensive range of hammock and foam dunnage for use with Folding Large Containers (FLC's) thus ensuring that larger components are kept free from damage throughout the supply chain direct to lineside.





# customised packaging solutions to meet your needs

As part of our service in Returnable Transit Packaging, we can adapt our containers to meet the specific needs of your products. Extending the size of the container by fabrication, adding vacuum formed sheet or foamed plastics to hold your products securely, will maintain the quality of the goods stored and transported.



**LINPAC Materials Handling – Australasia**  
**Tel:** +61 3 9264 9222 **Fax:** +61 3 9264 9269

**LINPAC Materials Handling – Benelux**  
**Tel:** +32 89 350 699 **Fax:** +32 89 350 596

**LINPAC Materials Handling – Brazil**  
**Tel:** +55 54 229 870 **Fax:** +55 54 229 4003

**LINPAC Materials Handling – France**  
**Tel:** +33 3 80 95 69 00 **Fax:** +33 3 80 95 69 24

**LINPAC Materials Handling – Germany**  
**Tel:** +49 5222 970-0 **Fax:** +49 5222 970-126

**LINPAC Materials Handling – Ireland**  
**Tel:** +353 1 8462323 **Fax:** +353 1 8462522

**LINPAC Materials Handling – Scandinavia**  
**Tel:** +46 8 28 16 00 **Fax:** +44 8 28 64 65

**LINPAC Materials Handling – South Africa**  
**Tel:** +27 21 577 120 **Fax:** +27 21 577 3399

**LINPAC Materials Handling – Spain**  
**Tel:** +34 93 317 51 91 **Fax:** +34 93 412 03 74

**LINPAC Materials Handling – USA**  
**Tel:** +1 502 863 5500 **Fax:** +1 502 863 5342



**LINPAC Materials Handling – UK**  
Road One, Winsford Industrial Estate,  
Winsford CW7 3RA  
**Office Tel:** +44 1606 593921  
**Fax:** +44 1606 861133

**email:** [lmhsolutions@linpac-mouldings.com](mailto:lmhsolutions@linpac-mouldings.com)  
**website:** [www.linpac.com](http://www.linpac.com)